

CH 4

Pg 239

1. right

2. equilateral

3. obtuse

4. isosceles

5. equilateral

6. scalene

7. 51° 8. 125° 9. 92° 10. \overline{EF} 11. \overline{JL} 12. $\angle E$ 13. $\angle L$

14. 9

15. 23

Pg. 247

13a. given

13b. $\overline{DB} \cong \overline{CB}$ 13c. $\overline{AB} \perp \overline{DC}$ 13d. Def. of \perp 13e. RT $\angle \cong$ thm.13f. $\overline{AB} \cong \overline{AB}$

13g. SAS steps 2, 5, 6

14. SAS

15. SAS

16. neither

17. neither

Pg 258

26. A

27. J

28. C

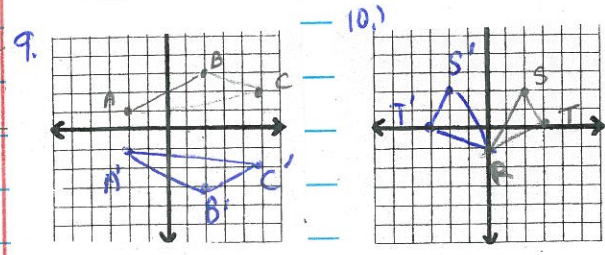
Pg 281

2. JK bisects $\angle MJN$	given
$\angle MJK \cong \angle NJK$	def. of bisect
$\overline{MJ} \cong \overline{NJ}$	given
$\overline{JK} \cong \overline{JK}$	reflex property
$\triangle MJK \cong \triangle NJK$	SAS steps 3, 2, 4

7. $\overline{CD} \parallel \overline{BE}$ and $\overline{DE} \parallel \overline{CB}$	given
$\angle DEC \cong \angle BCE$ and $\angle DCE \cong \angle BEC$	Alt. Int.
$\overline{CE} \cong \overline{CE}$	reflex property
$\triangle DEC \cong \triangle BCE$	ASA steps 2, 3
$\angle D \cong \angle B$	CPTC

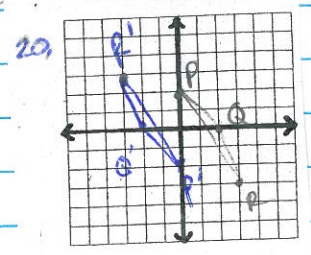
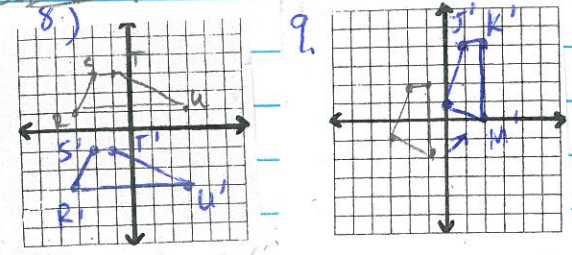
10. 100°
11. 6

CH 12 Pg. 827



Pg. 843

Pg. 834



24a $\langle 2, 1 \rangle$
24b $\langle 4, -2 \rangle$

36. 50
43. H
44. 180