

Brown's Ch. 9 Practice Test

Key

1.) Find Perimeter

Area = 100cm^2



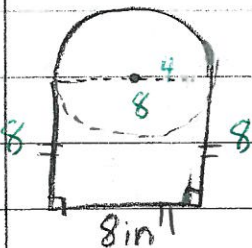
$b \cdot h = 100$

$b \cdot 5 = 100$

$b = 20$

$20 + 5 + 20 + 5 = 50\text{cm}$

2.)

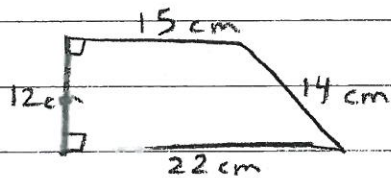


Perimeter = ?

$8 + 8 + 8 + \frac{1}{2}(2\pi \cdot 4)$

36.57in

3.) Find Area

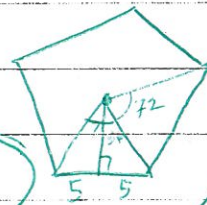


$\frac{1}{2}(15 + 22)12$

272cm^2

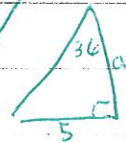
4.) Pentagon with side of 10 cm. Area = ?

172.05cm^2



$\frac{1}{2} a P = A$

$\frac{1}{2} (6.88) 50 = A$



$\tan 36 = \frac{5}{a}$

$6.88 = a$

5.) A triangle's length & width are tripled.

a.) effect on Area? times 9

b.) effect on perimeter? times 3

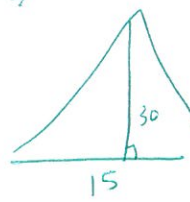
$A = \frac{1}{2}(3b)(3h)$

$A = 4.5bh$

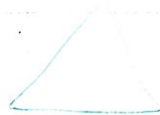
$A = \frac{1}{2}$



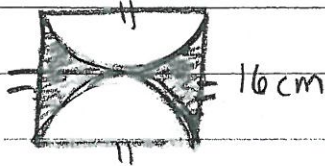
25



225

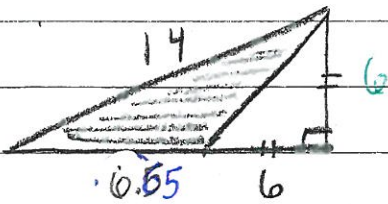


6.) What is probability a randomly chosen point lies in shaded region?



$$\frac{\square - \circ = 256 - 201.06}{256} \approx 0.21$$

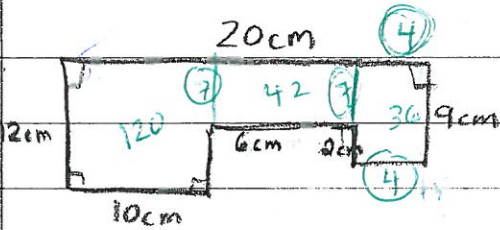
7.)



Area of shade region?

$$\frac{1}{2}(6.65)(6) = 19.95 \text{ u}^2$$

8.



Area = ?

$$120 + 42 + 36$$

$$198 \text{ cm}^2$$

9.) According to your calculations, you require 110 sq ft of wood to build a dog house. How many square inches is that?

$$15,840 \text{ sq. in}$$

