

Section/Lesson Title: 3-D GRAPHS

Materials:

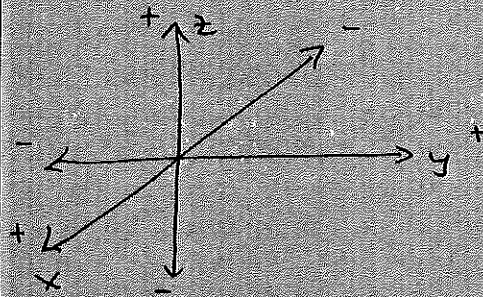
WS

HW#

2.10 WS

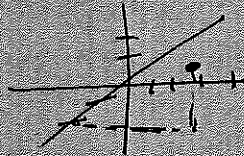
Reflections:

GRAPHING IN 3-D



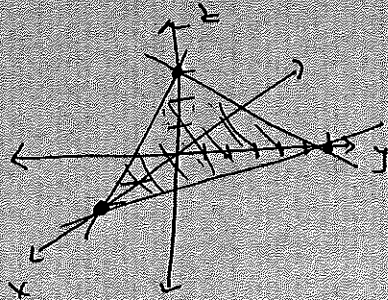
DIVIDES SPACE INTO
8 SECTIONS (OCTANTS)
INSTEAD OF 4 QUADRANTS

① VISUALIZE THE POINT $(2, 4, 2)$



② GRAPHING PLANES

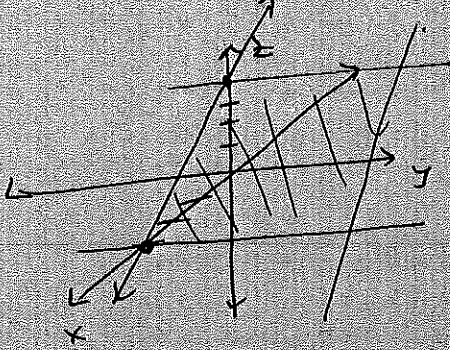
1. $3x + y + 2z = 6$ USE INTERCEPTS



$$\text{TRAY: } 3x - 2y + 4z = 12$$

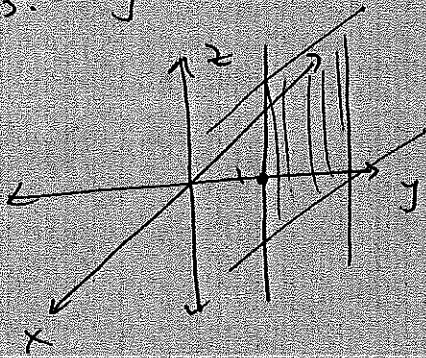


2. $4x + 3z = 12$



try: $3x + y = 6$

3. $y = 2$



try: $x = -4$