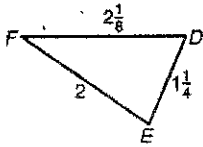
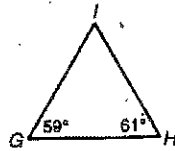


5.5

1. Write the angles from smallest to largest



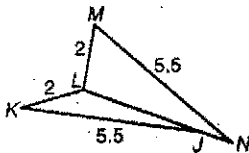
2. Write the sides from largest to smallest



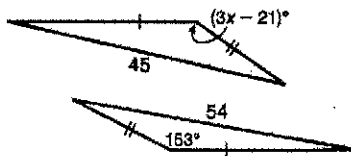
3. Two sides of a Δ are 7 and 13. What are possible lengths for 3^{rd} ?

5.6

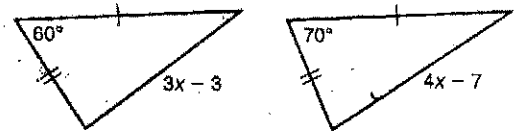
4. Compare $\angle K$ and $\angle M$



5. Find range for x

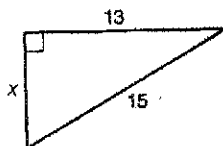


6. Find range for x



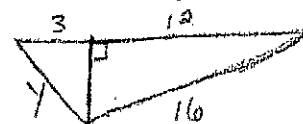
5.7

7. Solve for x



8. Classify triangle by angles if sides are 16, 7, and 12.

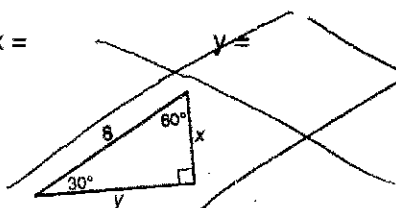
9. Solve for y



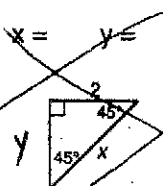
10. A man is standing at the top of a 50 ft. lighthouse. His wife is standing 15 feet away from the base of the lighthouse. If he throws her the car keys, how far did the keys travel?

5.8

11. $x =$



12. $x =$



We skipped for now