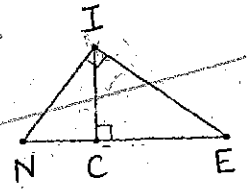


Mrs. Brown's Chapter 8 Practice Test

#1-3, Use diagram at right.



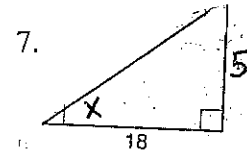
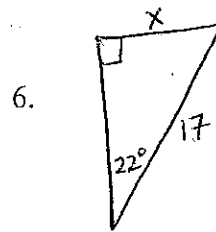
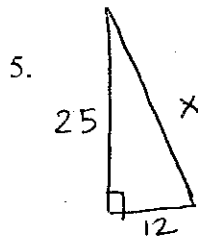
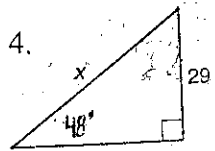
1. Name a triangle similar to $\triangle NIC$

2. Finish this proportion: $\frac{NC}{NI} = \frac{?}{EI}$

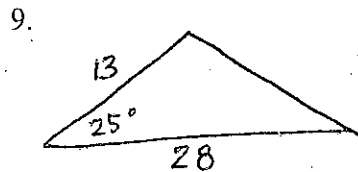
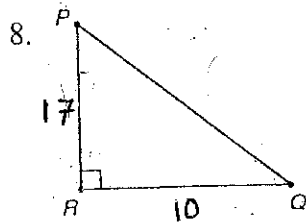
omit # 1-3

3. If $IE = 20$ and $NC = 8$, find IC .

#4-7, Solve for x.



#8-9, Solve the triangle.



10. In $\triangle XYZ$, $x = 23$, $y = 19$ and $m\angle Y = 42^\circ$, Solve for $m\angle X$

11. A submarine is surfaced, or, at sea level. It dives 300 ft. The angle of depression for the dive is 10° . What was the horizontal distance it took for the submarine to make the dive?

12. A boat traveling due east has to turn to avoid shallow water over a reef. The boat turns off its original course 34° to the north. The boat travels for 2.3 miles, then makes another turn back towards the original course. The angle between these two lines the boat has traveled on is 110° . How far does the boat need to travel before it will hit the line representing the original course?